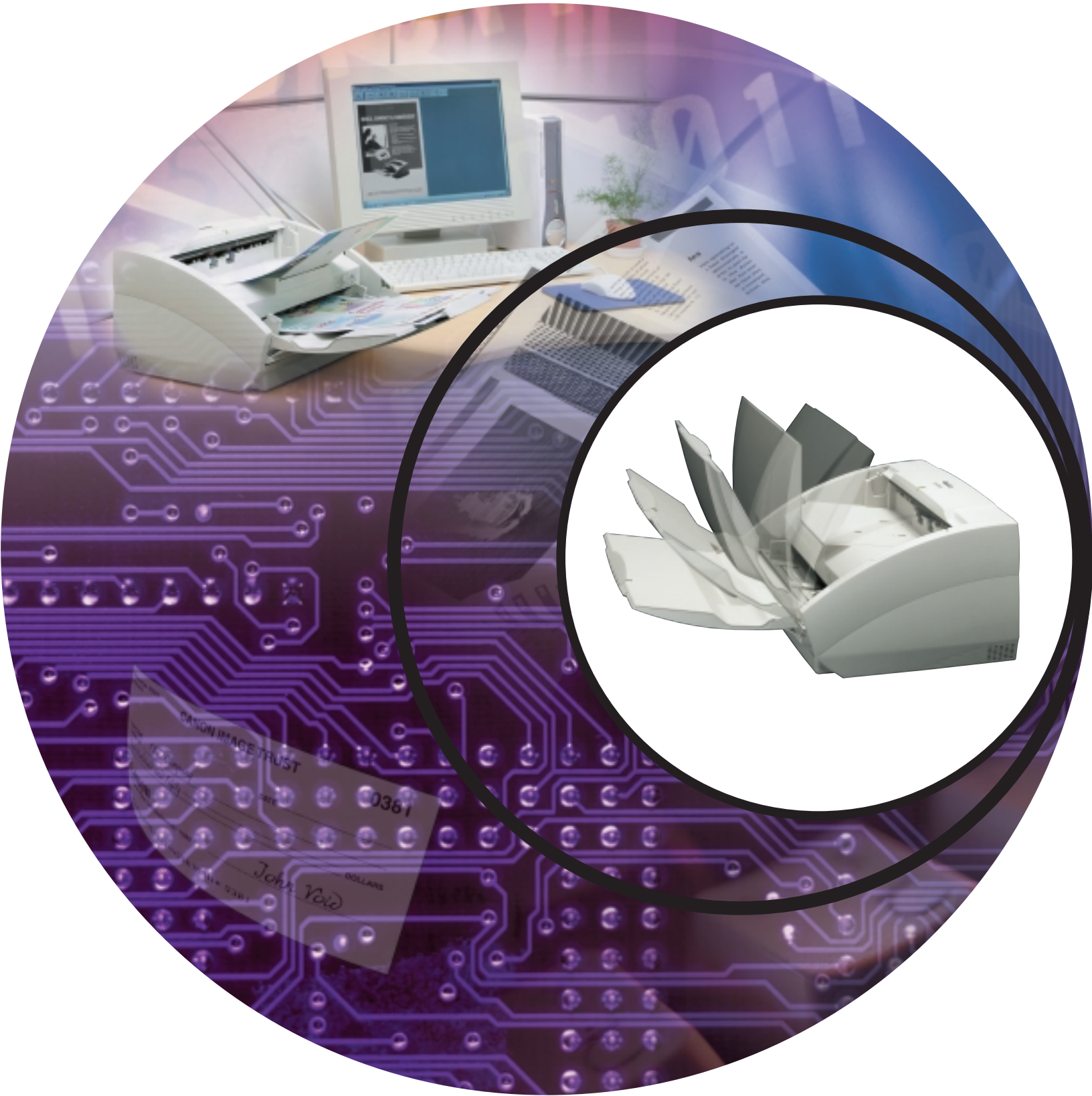


Canon

DR-3060



WE'VE JUST GIVEN DOWNSIZING A GOOD NAME.

The Canon DR-3060. A revolutionary Desktop Duplex Scanner offering true high performance where you never expected it, but always wanted it...right at your desk. It's a new generation of advanced scanning technology based on Canon's renowned DR-3000 Series. Fluent in the language of productivity, it understands your urgent need to improve it.

EXPANDING THE VOCABULARY OF HIGH PERFORMANCE.

Think powerful, versatile, and reliable. But don't forget compact, simple, and economical. By offering central reprographics-quality scanning at a departmental-level price, Canon's DR-3060 levels the playing field, shifting the balance of power in favor of departmental productivity. It represents the new standard in desktop scanning, and raises admission requirements for the entire category.



LEAN AND MEAN.

In today's increasingly crowded workplace, the DR-3060 is environmentally friendly. Compact and small, the sleek profile belies its extraordinary powers. Blazing scanning speeds of up to

86 images per minute, and 131 "front and back" checks per minute, mean accelerated throughput and reduced operating costs. Pure adrenaline for any department seeking a competitive edge. The DR-3060 could be the first desktop scanner to successfully take on the environment by becoming an integral part of it.

A BOLD STATEMENT ABOUT PRODUCTIVITY THAT BEGINS AND ENDS WITH CANON.

Canon adds dual sensors for fast, efficient one-pass, two-sided scanning. Plus, multiple scanning modes, such as black-and-white, 256-level high-speed grayscale, simplex/duplex, and text and photo modes, that simplify even complex jobs. Best of all, presorting, rescanning, and frequent paper jams have been virtually eliminated. So any department can become more productive, literally overnight—compliments of Canon.

INTUITIVE HANDLING. DEFINED BY THE LOOK OF CONFIDENCE ON EVERYONE'S FACE.

Canon's built-in Automatic Document Feeder makes paper-handling simple and flexible. Ideal for batch scanning of mixed documents, the scanner adjusts automatically for different paper sizes in the same batch. And with Skew Correction, misaligned documents are automatically straightened. The result: less user input and more efficient throughput...all automatically!

EASY IS AS EASY DOES.

PRE-SCAN – Lets users adjust image quality for the entire batch while previewing updated first page.

USER-PREFERENCE – Allows quick-start scanning from 20 preprogrammed settings.

SKIP BLANK PAGE – User-programmable function for automatic blank page detection and deletion.

SCAN PANEL – Pop-up virtual panel allows changes to be made during scanning.

WHAT MORE COULD YOU ASK FOR? GO AHEAD, ASK.

How about a choice of ISIS[®] or TWAIN drivers for compatibility with most scanning applications and software solutions? Or options such as the Canon Endorser and Carrying Case? The demand for enhanced departmental productivity grows louder every day. Thanks to the DR-3060, you'll be more ready to respond.



SPECIFICATIONS

Type:	Desktop Document Scanner
Document-feeding:	Automatic or Manual
Document Size	
Width:	2.2" – 10.1" (55mm – 297mm)
Length:	2.8" – 14.3" (70mm – 364mm)
Thickness	
Automatic-feeding:	0.06mm – 0.15mm
Manual-feeding:	0.06mm – 0.20mm
Grayscale:	8-bit, 256 Levels
Scanning Element:	Contact Image Sensor
Light Source:	LED
Operating Modes:	Simplex, Duplex, Black and White, Text Enhanced
Scanning Resolution:	100/200/300 dpi
High-speed Mode (Interpolated):	300 x 150 dpi (300 dpi)

Scanning Speeds*

Black-and-white:	32 ipm	Simplex	32 ipm
Black-and-white (High-speed):	43 ipm	Duplex	64 ipm
Grayscale:	32 ipm		86 ipm
Checks (High-speed):	131 ipm		64 ipm
Stacker Capacity:	100 Sheets (80 g/m ² , LTR)		262 ipm
Interface:	SCSI-II		
Scanner Drivers:	For Windows [®] 95/98/2000/Me, Windows NT [®] 4.0: ISIS [®] , TWAIN		

Dimensions (H x W x D):

Weight:	17.8 lb. (8.1Kg)
Power Consumption:	Max. 42W
Options:	Endorser ED-500, Carrying Cases

*Examples based on typical settings, rated in images per minute with letter-sized documents @ 200 dpi. Actual processing speeds may vary based on PC performance and application software.

Canon KNOW HOW™

1-800-OK-CANON
www.usa.canon.com

Canon U.S.A., Inc.
One Canon Plaza
Lake Success, NY 11042

As an ENERGY STAR[®] Partner, Canon U.S.A., Inc. has determined that this product meets the ENERGY STAR[®] guidelines for energy efficiency. The ENERGY STAR name is a registered trademark of the U.S. Environmental Protection Agency. ISIS is a registered trademark of Pixel Translations, Inc. Windows and Windows NT are registered trademarks of Microsoft Corporation in the United States and/or other countries. Canon is a registered trademark, and Canon Know How is a trademark of Canon, Inc. IMAGEANYWARE is a service mark of Canon U.S.A., Inc. All other terms and product names may be trademarks or registered trademarks of their respective owners, and are hereby acknowledged.

All specifications are subject to change without notice.

0023W306

0701-DR-3060-40M

PRINTED ON RECYCLED PAPER IN THE U.S.A.

