



Palmetto
Microfilm
Systems, Inc.

AX Universal Integrator

Key Features:

- Several methods for capturing index information from host applications including mouse pointer, selected text, and windows clipboard.
- Support for WINHLLAPI compliant terminal emulators, such as Reflections®, Attachmate® and IBM's E-Term®.
- Easy to configure – no programming.
- Ability to pass index values and initiate scan operation within ApplicationXtender.
- Ability to pass index values to perform batch indexing.
- Ability to perform table lookups and pass multiple index values to ApplicationXtender.
- Ability to perform Cross Application Queries
- Ability to perform full text queries.
- Integration provided for both ApplicationXtender and WebXtender.
- Provides for central configuration.
- Provides for concurrent licensing.
- Ability to perform point and shoot screen OCR.
- Can define Hot Keys to initiate Query or Scan operations.
- Support for multiple ApplicationXtender data sources.

Minimum Workstation Requirements:

- Pentium 166 MHz or higher
- 32MB RAM (64MB Recommended)
- Microsoft Windows NT, Windows 98 SE and higher (including Windows 2000 and Windows XP)
- ApplicationXtender® or WebXtender®

Integrate Documentum's ApplicationXtender® Or WebXtender® with virtually any application.

Palmetto Microfilm Systems, Inc. (PMSI) has years of experience with integrating Documentum's ApplicationXtender® and WebXtender® with legacy business applications. After searching for a tool to assist in the integration, PMSI developed the **AX Universal Integrator (AXUI)**. It is the most comprehensive AX and WX integration toolbar on the market. With no programming experience, an almost seamless integration can be established between virtually any legacy application and the Documentum



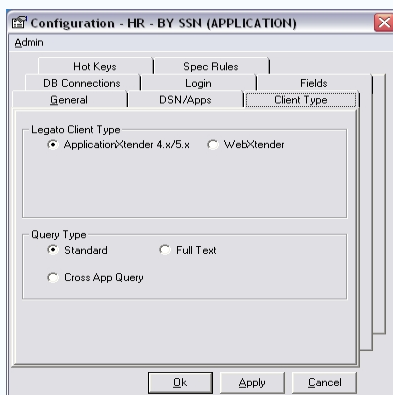
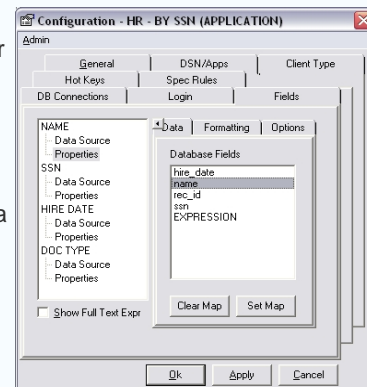
products.

The Universal Integrator utilizes multiple methods of capture to insure the greatest range of compatibility with the legacy applications. The use of data filters insure that only the data desired will be captured, allowing for greater user productivity.

The **AXUI's** features include support for full text searches and cross application queries. This allows the user to take advantage of the powerful query features of Documentum's products. Another feature is the ability to secure the configuration with a password once it is set. Other features include Database look up, so you can use one key field to populate other AX fields and concurrent licensing, which allows you to get the most out of your investment.

The best feature of the **AXUI** is the easy to use interface. The interface allows you to configure all the options of the **AXUI** and create a tight integration between AX or WX and a legacy application without programming. You can also create multiple specifications to integrate with multiple applications on a single workstation.

Best of all, **AXUI** is backed by PMSI's experienced and knowledgeable support staff. With years of experience in the industry and with the Documentum XtenderSolutions® products, our support staff is dedicated to finding solutions to your opportunities.



© 2004 Palmetto Microfilm Systems, Inc. All rights reserved
202 N. Lake Drive Lexington, SC 29072
Phone: 803-359-3703 Fax: 803-359-1217
www.pmsimage.com
info@pmsimage.com