

Canon

DR-7580



IMAGE FILING
SYSTEMS



DR-7580

IMAGE FILING SYSTEMS

A NEW OUTLOOK ON AFFORDABLE, PRODUCTION-LEVEL SCANNING

You shouldn't have to pay a high price for the latest technology in high-speed document scanning. Introducing the Canon DR-7580, a high-performance desktop production scanner that offers outstanding image quality, easy handling, and versatility—all at a price to suit virtually any company's budget.



Optimized Throughput and Reliability

A unique feeding system and advanced sensor technology ensure that a wide range of mixed-paper-size batches or other challenging scan operations are handled with minimal operator intervention at maximum scanning speed—up to 75 pages per minute in simplex or 150 images per minute* in duplex. Equipped with on-board JPEG compression, the DR-7580 scanner offers fast image processing, even with large data files.

Designed with advanced CIS sensor technology, you'll enjoy the benefits of a space-saving design, low power consumption, and enhanced image quality. Plus, no warm-up time is necessary, so the DR-7580 model is ready to start scanning from the moment power is turned on.

The ability to produce consistent image quality has earned Canon a solid reputation for reliable operation among its DR-Series Scanners. The DR-7580 lives up to high standards; it produces both black-and-white and grayscale images at an optical resolution of 600 dpi for capturing fine print and other small details with exceptional clarity. Its ability to recognize and rotate text orientation, correct skewed images, enhance faint text, and adjust gamma settings allow the DR-7580 device to efficiently and accurately capture valuable information included on contracts and forms. And automatic shading functions ensure high-quality image output.

* Examples based on typical settings, rated in pages/images per minute with letter-sized documents, portrait feeding direction, at 200 dpi. Actual processing speeds may vary based on PC performance and application software.

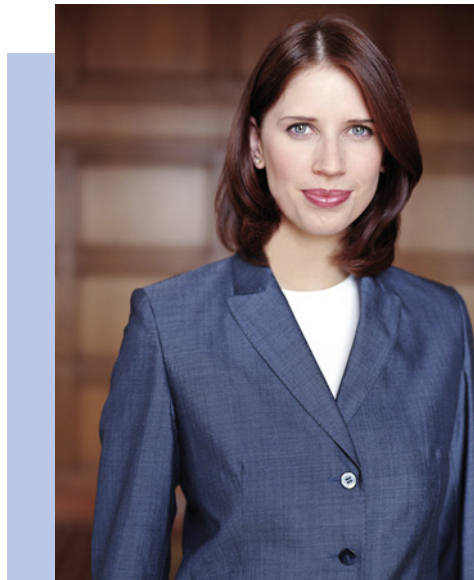
Free Yourself from Labor-Intensive Document Imaging Duties

Pre-sorting, job-preparation, and the need to rescan become a thing of the past when using the DR-7580 scanner. You can simply load the 500-sheet Automatic Document Feeder with a batch of mixed document types and hit start. Whether scanning vouchers or paper sizes up to 11" x 17", the DR-7580 device will self-adjust automatically to each document size or thickness in a mixed batch. For additional document handling flexibility, switching to Bypass mode ensures smooth feeding of carbonless paper and multipart forms.

With up to 100 customizable user-preference settings, there's no need to manually enter settings such as scan resolution, document size, scanning mode, and simplex or duplex prior to every scan job.

A Scanner with a Sensitive Side

In the best case scenario, a forgotten staple means lost working time. In the worst case, it could cause a system breakdown or damage the original document. But with Canon's exclusive, patented on-board Staple Detection feature, the DR-7580 device detects stapled documents and automatically stops the scanning process. When it comes to high-volume, paper-intensive environments, Canon's DR-7580 scanner was designed with your needs in mind.



The DR-7580 scanner further expresses its sensitive nature with the Ultrasonic Double Feed Detector. This highly accurate technology monitors documents for double-feeding with an ultrasonic signal. Upon detection of a potential overlap or double-feed, scanning is suspended while an error alert message is sent to the operator for immediate correction.

An Investment for the Long Haul

Because production-level scanning requires durability, the DR-7580 is a rugged yet compact scanner that's ready to handle almost any large processing job thrown its way. Industry-standard ISIS® and TWAIN drivers, as well as SCSI-III and USB 2.0 dual interfaces, ensure streamlined integration and easy installation. Bundled with CapturePerfect 3.0, a powerful image capture application, the DR-7580 is ready to use out of the box. This software package offers a number of output formats for compatibility with popular imaging systems, including PDF file security settings. Adding to the value of the DR-7580 scanner are several available options, such as the Imprinter, Endorser, and Barcode Module, to help satisfy the document imaging requirements of your business.

DR-7580 Specifications

Type: Production Document Scanner
Item Number: 0640B002AA
Document-feeding: Automatic or Manual
Document Size
Width: 2.2" – 12"
Length: 2.8" – 17"
(Up to 39.4" Long Document Mode)
Weight:
Automatic-feeding: 14-32 lb. Bond
Manual-feeding: 11-40 lb. Bond
Stacker Capacity: 500 Sheets (Letter)
Grayscale: 8-bit
Scanning Element: Contact Image Sensor (CMOS)
Light Source: RGB LED x 4
Operating Modes: Simplex, Duplex, Grayscale, Black and White, Error Diffusion, Advanced Text Enhancement, MultiStream

Dropout Color: RGB, User-selectable (front/back/both)
Optical Resolution: 600 dpi
Output Resolution: 100/150/200/240/300/400/600 dpi
Scanning Speeds:*
(LTR Portrait @ 200 dpi) Simplex Duplex
Black and White: 75 ppm 150 ipm
Grayscale: 75 ppm 150 ipm
Bundled Software: CapturePerfect 3.0
Interface: 1 USB 2.0 and 2 SCSI-III
Scanner Drivers: For Windows® 98SE/2000/Me/XP
Windows NT® 4.0: ISIS, TWAIN
Dimensions (H x W x D): 12.2" x 18.1" x 20.7"
Weight: Approx. 55 lb.
Power Consumption: 120W or less
(Energy Saving Mode: 7W or less)
Daily Duty Cycle: Approx. 10,000 Scans

Options:
Imprinter (Item No.: 8927A001AA)
Endorser (Item No.: 3650A005AA)
Mechanical Counter (Item No.: 8927A002AA)
Barcode Software Module
(Item No.: 0434B003AA)
Exchange Roller Kit
(Item No.: 8927A004AB)

* Examples based on typical settings, rated in pages/images per minute with letter-sized documents, portrait feeding direction, at 200 dpi. Actual processing speeds may vary based on PC performance and application software.

NOTE: The DR-7580 has been tested for compatibility with many of the industry's leading document management solution providers. Please visit the scanner's product page on Canon U.S.A.'s Web site at www.usa.canon.com for a comprehensive compatibility listing.

© 2005 Canon U.S.A., Inc. All rights reserved.

As an ENERGY STAR® Partner, Canon U.S.A., Inc. has determined that this product meets the ENERGY STAR® guidelines for energy efficiency. ENERGY STAR and the ENERGY STAR certification mark are registered U.S. marks. ISIS is a trademark of Captiva Software Corporation. Canon and Canon Know How are registered trademarks of Canon Inc. in the United States and may also be registered trademarks or trademarks in other countries. IMAGEANYWARE is a service mark of Canon U.S.A. Inc. in the United States. All referenced product names and other marks are trademarks of their respective owners.

Specifications subject to change without notice.

Canon KNOW HOW®

1-800-OK-CANON
www.usa.canon.com

Canon U.S.A., Inc.
One Canon Plaza
Lake Success, NY 11042

0053W166

0505-7580-20M-ADM



PRINTED ON RECYCLED
PAPER IN THE U.S.A.

Capture Perfect

